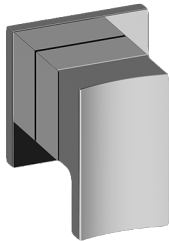


**G-8098-LM36E1-T**

M-Series Stop/Volume Control Valve Trim  
with Handle

**GRAFF**®



**Product Features**

- Single metal handle
- Decorative trim plate
- Use with G-8076 Stop/Volume Control Rough Valve with Pass-Through or G-8077 Stop/Volume Control Rough Valve

**Code compliance**

- ADA

**Available Finishes**

- 24K Polished Gold
- 24K Brushed Gold
- Architectural Black™
- Brushed Nickel
- Matte Black
- Olive Bronze
- Polished Chrome
- Polished Nickel
- Steelnox® (Satin Nickel)
- Architectural White

\* Special order finish - call for availability

