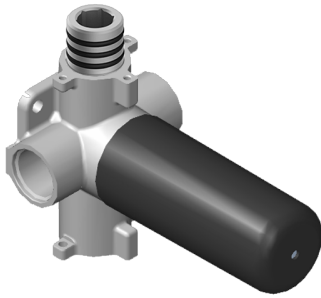


G-8052S

Two-Way Shared Function Diverter Volume Control Valve with Pass- Through and WITHOUT Off Function

GRAFF[®]



Product Features

- 11.5 gpm @ 60 psi
- 3/4" universal inlets/outlets with female threads
- Operates one function separately or two functions together
- Recommended to use with G-8077 Stop/Volume Control Valve
- Stacking inlet feature and pass-through port feature
- Supplied with protective plastic cover

Available Finishes

* Special order finish - call for availability

