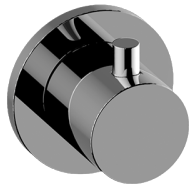


**G-8068-RH1-T**  
M.E./M.E. 25 Collection  
M-Series Round Two-Way Diverter Valve  
Trim Plate and Handle



**Product Features**

- Single metal handle
- Decorative trim plate
- Use with G-8052 2-way diverter (pass through) control rough valve WITH off function
- To complete package, you must order rough valve

**Available Finishes**

- 24K Polished Gold
- 24K Brushed Gold
- Brushed Brass PVD®
- Architectural Black™
- Brushed Onyx PVD®
- Rose Gold / Brushed Copper PVD®
- Gunmetal PVD®
- Matte Black
- Olive Bronze
- Onyx PVD®
- Polished Brass PVD®
- Polished Chrome
- Polished Nickel
- Rose Gold / Polished Copper PVD®
- Steelnox® (Satin Nickel)
- Unfinished Brass
- Unfinished Brushed Brass
- Architectural White

\* Special order finish - call for availability