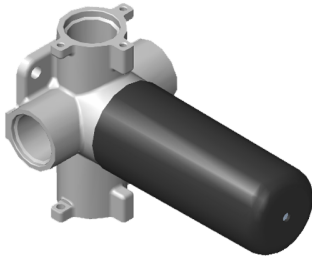


G-8053

Inverseur ? 3 voies 3/4" - corps ? encastrer

GRAFF®



Caractéristiques du produit

- ~11.4 gpm @ 60 psi
- 3/4" universal inlets/outlets with female threads
- Operates one function at a time
- Stacking inlet feature
- Supplied with protective plastic cover
- CALGreen compliant depending on functions